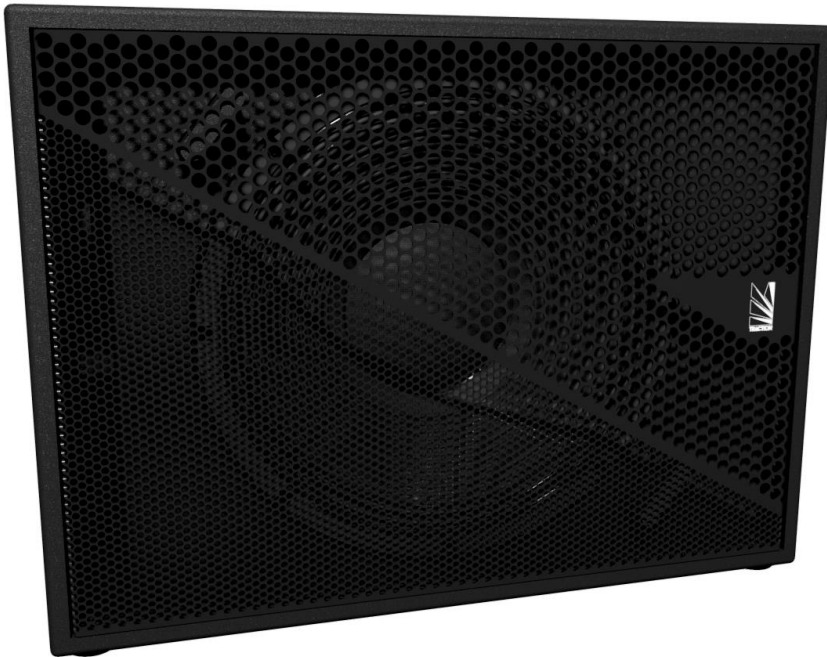


# Harrier SW15-2.1

Active 15" Bass Reflex Subwoofer



The SW15-2.1 is an active reflex subwoofer featuring a 15" driver with high power handling, high linear excursion and superior heat dissipation for stability and fidelity at full output.

The SW15 occupies a small footprint whilst providing a stable foundation for pole mounted systems, and the use of 15mm birch plywood throughout keeps the total weight low. FEA optimised bracing alongside careful acoustic design prevents the cabinet from resonating excessively and distorting the output, which leads to full and impactful bass at all listening volumes.

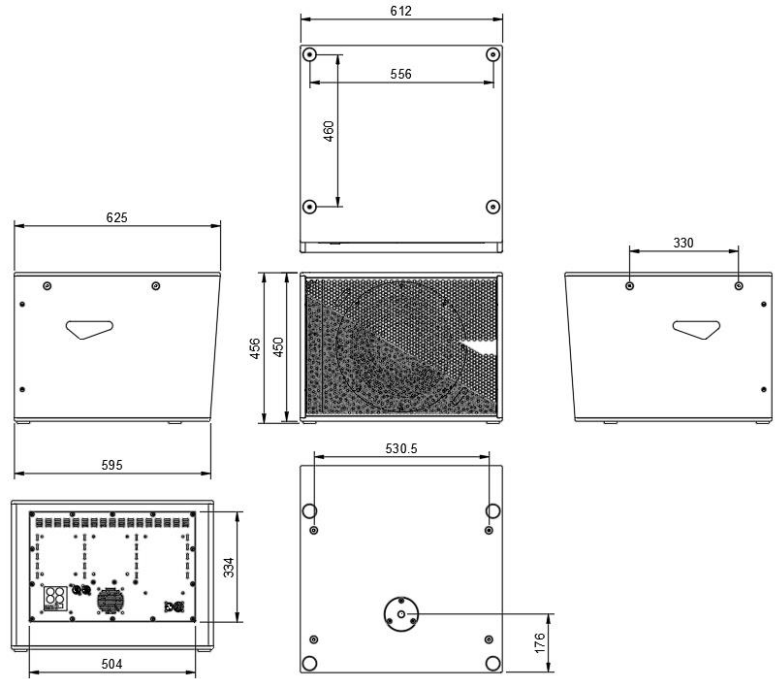
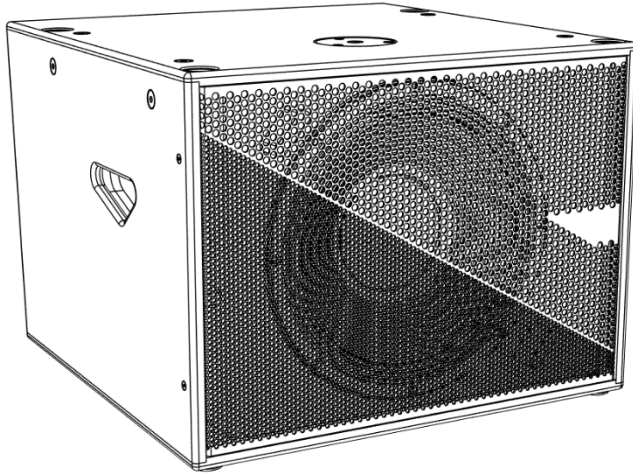
This sub is driven by a Traction Engine 2.1 amplifier fitted to the rear, delivering up to 3000W into the SW15-2.1 and a passive auxiliary SW15, with 96kHz DSP processing on each channel. The Traction Engine 2.1 amplifier also features Left and Right output channels to drive up to four Traction products, allowing the user to build a full range stereo system that is just as comfortable in distributed install situations as it is as a small Front of House PA. The user can choose between four pre-loaded DSP system presets depending on which Traction product they are partnering with the SW15-2.1.

M10 threads places around the top of the cabinet are provided for suspending or securing the SW15 in install situations, and an M20 threaded pole mount is fitted to the top. Two Neutrik NL4 connectors wired in parallel are provided on a recessed connector dish, with the driver input taken from pins 2+ and 2-, which minimises cabling and makes for an easier setup.

The cabinet is finished in textured polyurea, and the interior lined with damping material made from recycled plastics. All external fixings are stainless steel with an anodised black finish. The drivers are protected by a heavy duty 14 Gauge (2mm) steel grill with a black powder coated finish.

# Harrier SW15-2.1

## Active 15" Bass Reflex Subwoofer



Type	Single 15" bass reflex subwoofer
Frequency Response	32Hz-150Hz (-3dB)
HF Driver	N/A
LF Driver	15" cone driver with high power handling and excursion
Power Handling HF (2)	N/A
Power Handling LF (2)	N/A
Recommended Amplifier	Traction Engine 2.1
Sensitivity (2)	97dB
Maximum SPL (4)	134dB
Nominal Impedance	8 Ohm
Crossover	Manufacturer supplied DSP preset only
Connectors	2x NL4 Output
Input Connections	2x XLR Input   USB-B Control Port
Nominal Dispersion (-6dB)	Omni
Primary Construction Material	15mm Birch plywood
Available Finish	Black PU Coating
Dimensions	612mm x 456mm x 515mm
Fittings	8 M10 threaded rigging points
Weight	44kg

### Notes

- (1) Measured on axis in half (2pi) space at two meters and referred to 1 meter.
- (2) Tested to AES 2-1984 Rev. 2003.
- (3) Measured in half (2pi) space at 2 meters with 283V input, using band limited pink noise, then referred to 1 meter.
- (4) Calculated at 1 meter.