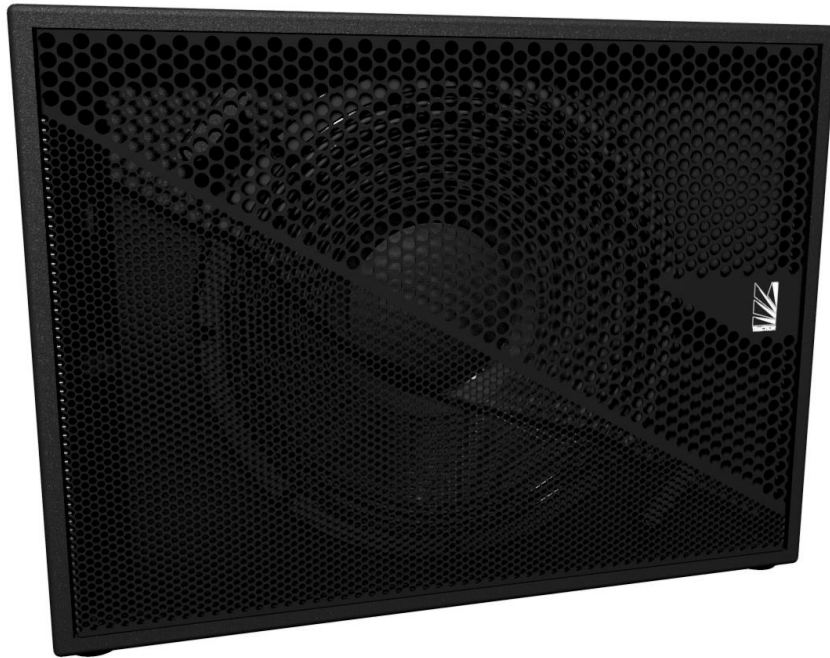


Harrier SW15

Compact 15" Bass Reflex Subwoofer



The SW15 is a passive reflex subwoofer featuring a 15" driver with high power handling, high linear excursion and superior heat dissipation for stability and fidelity at full output.

The SW15 occupies a small footprint whilst providing a stable foundation for pole mounted systems, and the use of 15mm birch plywood throughout keeps the total weight low. FEA optimised bracing alongside careful acoustic design prevents the cabinet from resonating excessively and distorting the output, which leads to full and impactful bass at all listening volumes.

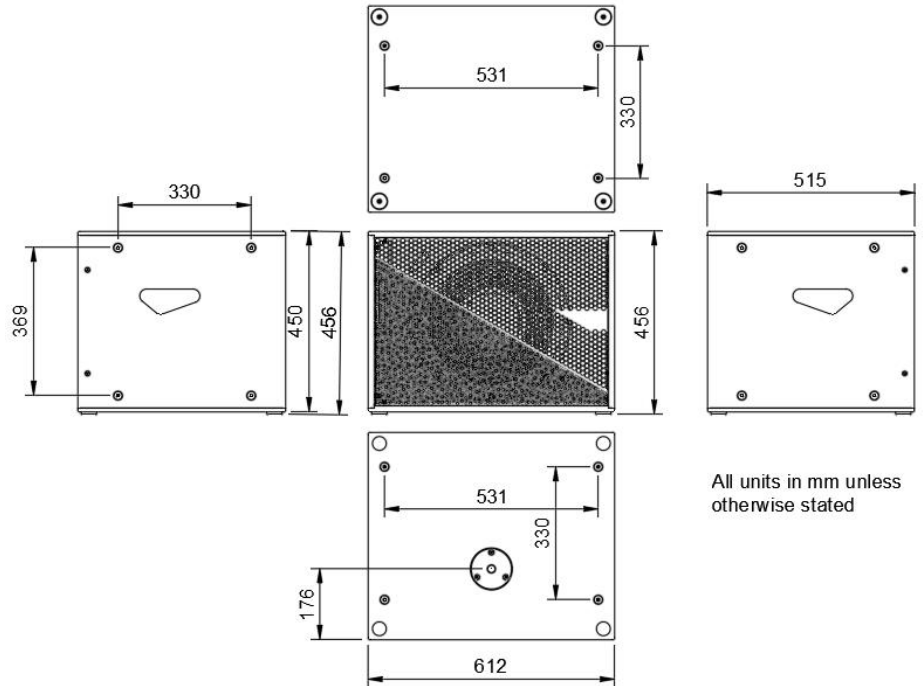
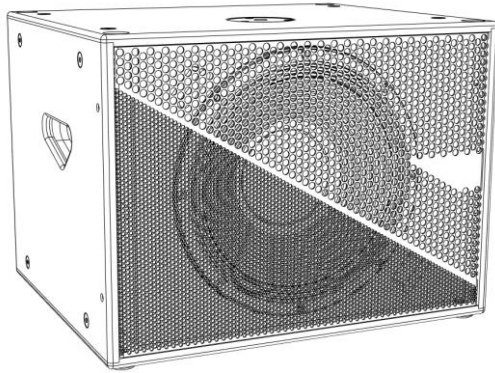
This sub has been designed specifically to fit into our Harrier 2.1 system, used as a slave sub for the active Harrier SW15-2.1. The four rubber feet fitted to the underside align with the active version, adding a variety of options for stacking and arranging Harrier systems.

M10 threads places around the top of the cabinet are provided for suspending or securing the SW15 in install situations, and an M20 threaded pole mount is fitted to the top. Two Neutrik NL4 connectors wired in parallel are provided on a recessed connector dish, with the driver input taken from pins 2+ and 2-, which minimises cabling and makes for an easier setup.

The cabinet is finished in textured polyurea, and the interior lined with damping material made from recycled plastics. All external fixings are stainless steel with an anodised black finish. The drivers are protected by a heavy duty 14 Gauge (2mm) steel grill with a black powder coated finish.

Harrier SW15

Compact 15" Bass Reflex Subwoofer



Type	Single 15" bass reflex subwoofer
Frequency Response	35Hz-200Hz (-3dB)
HF Driver	N/A
LF Driver	15" cone driver with high power handling and excursion
Power Handling HF (2)	N/A
Power Handling LF (2)	1000W AES 2000W Program
Recommended Amplifier	Traction Engine 4 2700
Sensitivity (2)	97dB SPL
Maximum SPL (4)	134dB SPL
Nominal Impedance	8 Ohm
Crossover	Manufacturer supplied DSP preset only
Connectors	2x Neutrik® NL4 SpeakOn™ with pins linked
Input Connections	Pins 2 +/-
Nominal Dispersion (-6dB)	Omni
Primary Construction Material	15mm Birch plywood
Available Finish	Black PU Coating
Dimensions	612mm x 456mm x 515mm
Fittings	16 M10 threaded rigging points
Weight	40kg

Notes

(1) Measured on axis in half (2pi) space at two meters and referred to 1 meter.

(2) Tested to AES 2-1984 Rev. 2003

(3) Measured in half (2pi) space at 2 meters with 283V input, using band limited pink noise, then referred to 1 meter.

(4) Calculated at 1 meter.